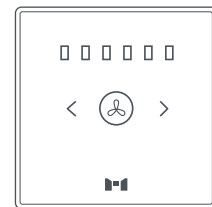




MTronic Fan Dimmer



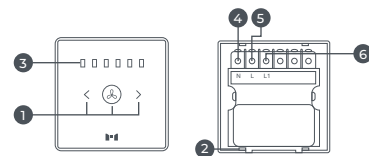
QUICK START GUIDE

EN

Product Overview 2

MTronic Fan Dimmer is a smart gang switch that allows you to control the state and speed of your fan. It is capable of handling six levels of speed.

1. Touch Buttons
2. Casing Lock
3. Speed Level Display
4. Neutral Wire Terminal
5. Live Wire Terminal
6. Load Terminal



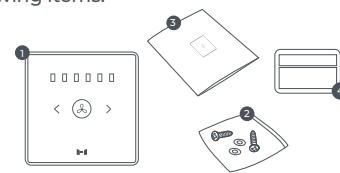
Fan Dimmer's Status LED

| Status LED | Description |
|--|-------------------------------------|
| Turns Dim | Panel's button is off |
| Lights White | Panel's button is on |
| Fast Blinking White Light for 3 Seconds | Panel is ready for unprovisioning |
| Slow Blinking White Light for 30 Seconds | Panel is available for provisioning |

Package Contents/Tools Required 3

The package consists of the following items:

1. MTronic Fan Dimmer x1
2. Screws x2
3. Quick Start Guide x1
4. Warranty Card x1



Following tools are required to install the Fan Dimmer on the wall:

1. Slotted Screwdriver
2. Cross-Slot Screwdriver
3. Wire Cutting Pliers
4. Insulation Gloves
5. Insulation Tape
6. Mains Tester

Safety Instructions 4

⚠ Danger!
Note about hazard

⚠ Warning!
Note about potential hazard

DOs

⚠ Since the installation requires working with high voltages, it MUST be installed and uninstalled by an expert electrician.

⚠ Ensure there are fuse/circuit breakers installed for the space and turn them off before installation. Turn them on only after the installation is done.

→ Wear insulation gloves, use wire nuts/electrical insulation tape to insulate the wire joints or stripped parts of the wire, and trim the extra wire to avoid electrocution and short-circuiting.

→ Use a wire gauge to select the wire size as required. Use 22-12 AWG solid or stranded wire preferably.

→ Make sure the panel has no gap with the wall that allows its removal with bare hands. Also ensure that the screw terminals and wires in it are correctly seated.

Safety Instructions 5

→ Use a slotted screwdriver that fits well in the casing lock, or it will damage the lock.

→ Operate the device only within indoor environments to keep it sheltered from all weather conditions.

→ After installation, clean the glass top of the device well such that it has no grease, moisture, or covering on it.

DON'Ts

⚠ The device must not be used in an explosive atmosphere.

⚠ Do not open the device by yourself nor use it if any of its parts is broken.

⚠ Do not interchangeably use the Neutral and Live wires.

→ Do not place the device in an exposed setting after connecting the load.

→ Do not connect a load higher than the power rating of the device.

Safety Instructions/Installation 6

→ To avoid damage to the circuitry, do not tighten the mounting screws more than required.

→ Do not allow children to play with the device or its packaging as its plastic film and small components may pose a choking hazard to them.

→ Do not install the device in damp rooms or wet areas.

→ Do not use a dripping wet cloth to clean the device.

→ Do not dispose-off the device with other household garbage. It should be recycled according to the National regulations.

Installation

1. Switch off the AC supply from the fuse/circuit breaker.
2. Connect the wires as shown in the figure A.
3. Remove the glass top of Fan Dimmer by inserting the tip of a slotted screwdriver into the casing locks at the bottom (See figure B).

Installation 7

4. With the help of a cross-slot screwdriver, fix the Fan Dimmer on the wall using mounting screws (See figure C).

5. Slide the glass top downwards, into the plastic casing, and press at the bottom until it gets locked (See figure D).

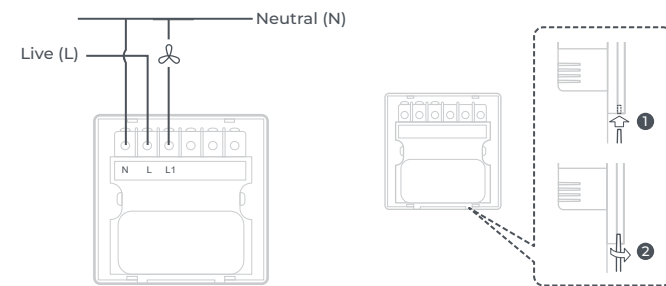


figure A

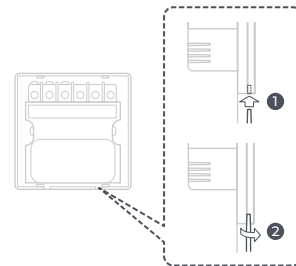


figure B

Installation 8

6. Switch on the AC supply for the Fan Dimmer and wait for at least 30 seconds for a proper operation.

7. Navigate to MTronic Help Center (support.mtronic.pk) and follow the steps in the Fan Dimmer product category to provision your panel with the application.

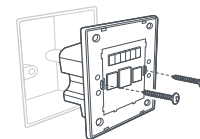


figure C

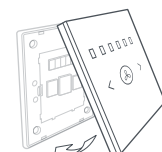


figure D

Note: To unprovision the panel, press its button for 5 seconds until the light starts blinking. The light blinks for 3 seconds, press the button again for 5 seconds within that 3 second interval to complete the unprovisioning process. Once the panel is unprovisioned, it blinks for 30 seconds, making it available for provisioning again.

Technical Specifications 9

| Specification | Details |
|---------------------|--|
| Item Type | Switch |
| Color | White |
| Material | PC V0 Flame Retardant and Tempered Glass |
| Control Method | Touch and Wireless |
| Speed Levels | 6 |
| Dimensions | 86 x 86 x 36 mm |
| Input Voltage | 230 VAC, 50/60 Hz |
| Standby Power | < 1 Watt |
| Max Load Capacity | 0.8 A |
| Interface | Short-Range Mesh Technology 5.0, IEEE 802.15.1 |
| Dependency | MTronic MHub |
| Compatibility | Google Home, Amazon Alexa Assistant |
| Working Temperature | -25°C ~ +50°C |
| Humidity | 85% |

Technical Specifications 10

Radio Specifications

| | |
|-------------------------------|-----------------------------|
| Wireless Communication | Short-Range Mesh Technology |
| Short-Range Technology Module | 2.402-2.480 GHz |
| Frequency | |

Antenna Properties/ Antenna Gains

| | |
|-------------------|----------|
| Transmitter Power | +9dBm |
| Antenna Gain | 3.96 dBi |

Disclaimers

→ MTronic disclaims the responsibility for any property or material damage and personal injuries caused by the incorrect installation, handling, or usage of the MTronic Fan Dimmer.

→ MTronic disclaims responsibility for the consequential damage caused by the opening of MTronic Fan Dimmer by yourself.

