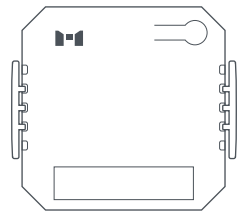




MTronic Smart Relay



Quick Start Guide

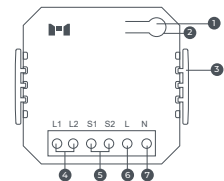
EN

Product Overview

2

The MTronic Smart Relay is a retrofit for your existing electrical switches to turn them into smart switches

1. Reset Button
2. Status LED
3. Mounting Bracket
4. Load Terminals
5. Switch Terminals
6. Live Wire Terminal
7. Neutral Wire Terminal



Smart Relay's Status LED

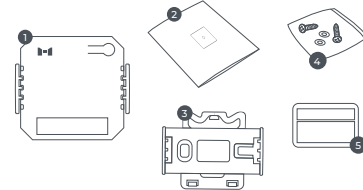
Status LED	Description
Slow Blinking White Light	Relay is powered/Relay is available for provisioning
Fast Blinking White Light for 3 Seconds	Relay is ready for unprovisioning

Package Contents/Tools Required

3

The package consists of the following items:

1. MTronic Smart Relay x 1
2. Quick Start Guide x 1
3. Mounting Bracket x 1
4. Mounting Screws x 2
5. Warranty Card x 1



You will require the following tool(s) to install the smart relay in your existing switchboard:

1. Cross-Slot Screwdriver
2. Wires
3. Wire Cutting Pliers
4. Insulation Gloves
5. Insulation Tape
6. Mains Tester

Safety Instructions

4

⚠ Danger! Note about hazard	⚠ Warning! Note about potential hazard
---------------------------------------	--

DOs

▲ Since the installation requires working with high voltages, it MUST be installed and uninstalled by an expert electrician.

▲ Ensure there are appropriate fuse/circuit breakers installed for the space and turn them off before installation. Turn them on only after the installation is done.

▲ Tighten or loosen the screws when no Live wire is connected.

⚠ Install the device ONLY inside the switch board.

→ Operate the device only within indoor environments to keep it sheltered from all weather conditions.

→ Use a wire gauge to select the wire size as required. Use 26~16 AWG solid or a stranded wire preferably.

Safety Instructions

5

→ Wear insulation gloves, use wire nuts/electrical insulation tape to insulate the wire joints or stripped parts of the wire, and trim the extra wire to avoid electrocution and short-circuiting.

→ The connections must be made as shown in the wiring diagram.

→ Use the device only under 2000m altitudes

DON'Ts

▲ The device must not be used in an explosive atmosphere.

▲ If smart relay stops functioning, please reset the external circuit breaker of the space. Do not try to open or access the housing of the relay.

⚠ Do not open the smart relay by yourself nor use it if any of its parts is broken. Also, do not use relay if its internal fuse is broken.

⚠ Do not interchangeably use the Neutral and Live wires.

⚠ Do not connect a load higher than the power rating of the smart relay (Refer to the technical specifications).

⚠ Do not dispose-off the device with other household garbage. It should be recycled according to the National regulations.

Installation/Safety Instructions

6

⚠ Do not allow children to play with the smart relay or it's packaging as its plastic film and small components may pose a choking hazard to them.

⚠ Do not use a dripping wet cloth to clean the device.

⚠ Do not place the smart relay in an exposed setting after connecting the load.

Installation

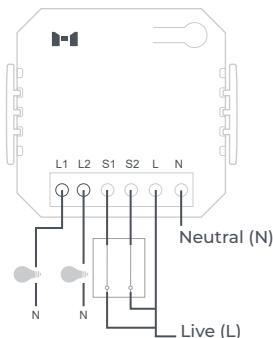
1. Switch off the AC supply from the circuit breaker.
2. Connect the wires of the load/electronic device to be controlled with the L1 and L2 respectively.
3. Connect the wires of the mechanical switches of the switchboard with the S1 and S2.
4. Connect the Live Wire in L and Neutral wire in N.
5. Using the cross-slot screwdriver, tighten all the connections.

Installation

7

6. Carefully adjust the smart relay along with the cluster of existing wire connections inside the switchboard.

7. Turn on the AC supply from the circuit breaker. The smart relay is ready for pairing with MTronic MHub as soon as its powered.

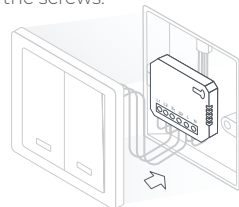


Installation

8

8. Navigate to MTronic Help Center (support.mtronic.pk) and follow the steps in the Smart Relay product category to provision your relay with the application.

9. Once the smart relay is successfully paired with the MTronic MHub, close your switchboard using the screws.



Note: To unprovision the relay, press and hold its power button for 5 seconds until the light starts blinking. The light blinks for 3 seconds, press and hold the button again for 5 seconds within that 3 second interval to complete the unprovisioning process. Once the relay is unprovisioned, it starts blinking, making itself available for provisioning again.

Technical Specifications

9

Specification	Details
Item Type	Relay Switch
Available Color	White
Material	ABS Plastic
Control Method	Wireless, Connected Mechanical Switches
Channels	2
Dimensions (with mounting bracket)	51.5mm x 46mm x 23mm
Dimensions (without mounting bracket)	46mm x 46mm x 18.5mm
Working Voltage	230 VAC, 50-60 Hz
Standby Power	< 1 Watt
Max Load	L1 or L2 : LED (Externally Ballasted): Max 100W Resistive Load: Max 4A L1 & L2 : LED (Externally Ballasted): Max 200W Resistive Load: Max 8A
Interface	Short-Range Mesh Technology 5.0, IEEE 802.15.1
Connector Type	Block Connector
Compatibility	MTronic MHub, Google Home, Amazon Alexa Assistant
Working Temperature	-5°C ~ +50°C
Humidity	85%

Technical Specifications

10

Radio Specifications

Wireless Communication	Short-Range Mesh Technology
Short-Range Technology Module	2.402-2.480 GHz Technology
Frequency	

Antenna Properties/ Antenna Gains

Transmitter Power	+9dBm
Antenna Gain	3.96 dBi

Disclaimers:

▲ MTronic disclaims the responsibility for any property or material damage and personal injuries caused by the incorrect installation, handling, or usage of the smart relay.

▲ MTronic disclaims responsibility for the consequential damage caused by the opening of smart relay by yourself.

MTronic, 1st Floor, Signature 1 Plaza, Business Square
Gulberg Greens Block C, Islamabad, 44000
www.mtronic.pk

