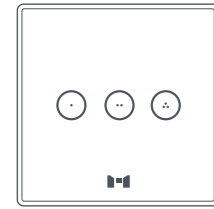




## MTronic Touch Panel - 3 Gang



### QUICK START GUIDE

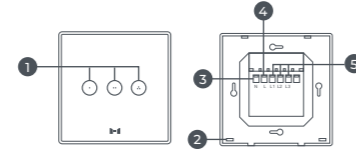
EN

## Product Overview

2

MTronic Touch Panel - 3 Gang is a smart gang switch that allows you to control three devices at a same time by tapping on the gangs manually and by using the MTronic applications.

1. Touch Buttons
2. Casing Locks
3. Neutral Wire Terminal
4. Live Wire Terminal
5. Load Terminals



### Touch Panel's Status LED

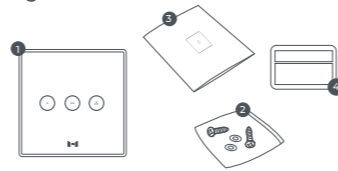
Status LED	Description
Turns Dim	Panel's button(s) is off
Lights White	Panel's button(s) is on
Fast Blinking White Light for 3 Seconds	Panel is ready for unprovisioning
Slow Blinking White Light for 30 Seconds	Panel is available for provisioning

## Package Contents/Tools Required

3

The package consists of the following items:

1. MTronic Touch Panel - 3 Gang x1
2. Screws x2
3. Quick Start Guide x1
4. Warranty Card x1

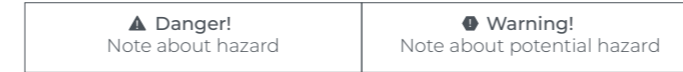


Following tools are required to install the Touch Panel on the wall:

- |                        |                           |
|------------------------|---------------------------|
| 1. Slotted Screwdriver | 2. Cross-Slot Screwdriver |
| 3. Wire Cutting Pliers | 4. Insulation Gloves      |
| 5. Insulation Tape     | 6. Mains Tester           |

## Safety Instructions

4



**Tighten or loosen the screws when no Live wire is connected.**

- 1 Use the device only under 2000m altitudes.
- 1 Since the installation requires working with high voltages, it MUST be installed and uninstalled by an expert electrician.
- 1 Ensure there is an external fuse/circuit breaker of 10A installed in the space.
- Turn the fuse/circuit breaker off before installation. Turn them on only after the installation is done.
- Operate the device only within indoor environments to keep it sheltered from all weather conditions.

## Safety Instructions

5

- Wear insulation gloves, use wire nuts/electrical insulation tape to insulate the wire joints or stripped parts of the wire, and trim the extra wire to avoid electrocution and short-circuiting.
- Use a wire gauge to select the wire size as required. Use 26~14 AWG solid or stranded wire preferably.
- Make sure the panel has no gap with the wall that allows its removal with bare hands. Also ensure that the screw terminals and wires in it are correctly seated.
- After installation, clean the glass top of the Touch Panel well such that it has no grease, moisture, or covering on it.
- Use a slotted screwdriver that fits well in the casing locks, or it will damage them.
- Under extremely low temperatures, operate the panel only after wearing gloves to avoid the risk of frostbite.

## Safety Instructions

6

DON'Ts

**The device must not be used in an explosive atmosphere.**

- 1 Do not open the device by yourself nor use it if any of its parts is broken
- 1 Do not interchangeably use the Neutral and Live wires.
- 1 Do not try to repair the device by yourself.
- Do not allow children to play with the device or it's packaging as its plastic film and small components may pose a choking hazard to them.
- Do not place the device in an exposed setting after connecting the load.
- Do not dispose-off the device with other household garbage. It should be recycled according to the National regulations.
- To avoid short-circuiting, do not peel off the plastic from the wire more than required.

## Safety Instructions/Installation

7

- Do not use a dripping wet cloth to clean the device.
- Do not install the device in damp rooms or wet areas.
- Do not connect a load higher than the power rating of the device (Refer to the technical specifications).
- Do not leave the space between panel and wall as the water may seep in to the panel only from the wall.
- Do not remove the WARRANTY VOID sticker as it voids the warranty.
- Do not try to remove the glass casing using bare hands, it can only be removed by inserting the slotted screwdriver in casing locks.

## Installation

1. Switch off the AC supply from the fuse/circuit breaker.
2. Connect the wires as shown in the figure A.
3. Remove the glass top of the Touch Panel by inserting the tip of a slotted screwdriver into the casing locks at the bottom (See figure B).

## Installation

8

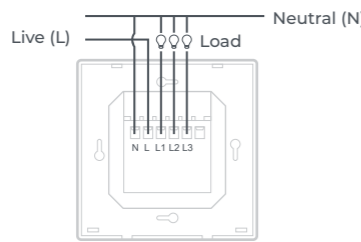


figure A

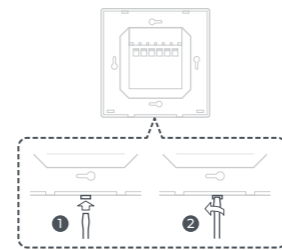


figure B

## Installation

9

4. With the help of a cross-slot screwdriver, fix the MTronic Touch Panel on the wall using mounting screws (See figure C).
5. Slide the glass top downwards, into the plastic casing, and press at the bottom until it gets locked (See figure D).
6. Switch on the AC supply for the MTronic Touch Panel and wait for at least 30 seconds for a proper operation.
7. Navigate to MTronic Help Center (support.mtronic.pk) and follow the steps in the Touch Panel product category to provision your panel with the application.

**Note:** To unprovision the panel, press its button for 5 seconds until the light starts blinking. The light blinks for 3 seconds, press the button again for 5 seconds within that 3 second interval. Once the panel is unprovisioned, it blinks for 30 seconds, making it available for provisioning again.

## Installation

10

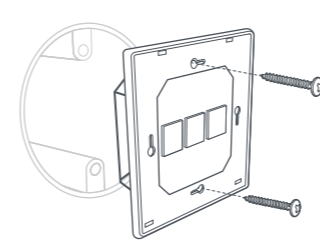


figure C



figure D

## Technical Specifications

11

Specification	Details
Item Type	Switch
Available Colors	White, Black, Grey, and Gold
Material	PC V0 Flame Retardant and Tempered Glass
Control Method	Touch and Wireless
Dimensions	86 x 86 x 36 mm
Input Voltage	230 VAC, 50/60 Hz
Standby Power	< 1 Watt
Max Load	L1 or L2 or L3: LED (Externally Ballasted): Max. 100 W L1 & L2 & L3: LED (Externally Ballasted): Max. 300 W
Interface	Short-Range Mesh Technology 5.0, IEEE 802.15.1
Dependency	MTronic MHub
Compatibility	Google Home, Amazon Alexa
Working Temperature	-25°C ~ +50°C
Humidity	85%
IP Rating	IP20

## Technical Specifications

12

Radio Specifications

Wireless Communication	Short-Range Mesh Technology
Short-Range Technology Module	2.402-2.480 GHz
Frequency	

Antenna Properties/ Antenna Gains

Transmitter Power	+9dBm
Antenna Gain	3.96 dBi

Disclaimers

- MTronic disclaims the responsibility for any property or material damage and personal injuries caused by the incorrect installation, handling, or usage of the MTronic Touch Panel - 3 Gang.
- MTronic disclaims responsibility for the consequential damage caused by the opening of MTronic Touch Panel - 3 Gang by yourself.

