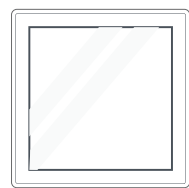




## MTronic LCD Touch Panel (4 Inch)



### Quick Start Guide

EN

## Product Overview 2

MTronic LCD Touch Panel (4 Inch) is an intuitive LCD device having an IPS display. This device allows you to control up to three light switches and trigger up to four scenes at the comfort of a tap.

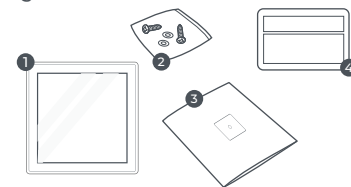
1. LCD Screen
2. Casing Locks
3. Neutral Wire Terminal
4. Live Wire Terminal



## Package Contents/Tools Required 3

The package consists of the following items:

1. MTronic 4-inch LCD Panel x 1
2. Screws x 2
3. Quick Start Guide x 1
4. Warranty Card x 1



You will require the following tools to install the panel:

1. Slotted Screwdriver
2. Cross-slot Screwdriver
3. Wire Cutting Pliers
4. Insulation Gloves
5. Insulation Tape
6. Mains Tester

## Safety Instructions 4

<b>⚠ Danger!</b> Note about hazard	<b>⚠ Warning!</b> Note about potential hazard
---------------------------------------	--

### DOs

▲ Since the installation requires working with high voltages, it MUST be installed and uninstalled by an expert electrician.

▲ Tighten or loosen the screws when no Live wire is connected.

⚠ Use the device only under 2000m altitudes.

⚠ Ensure there are appropriate fuse/circuit breakers installed for the space and turn them off before installation. Turn them on only after the installation is done.

→ Operate the device only within indoor environments to keep it sheltered from all weather conditions.

→ Use a wire gauge to select the wire size as required. Use 26~16 AWG solid or a stranded wire preferably.

→ Use a slotted screwdriver that fits well in the casing locks, or it will damage them.

## Safety Instructions 5

→ Wear insulation gloves, use wire nuts/electrical insulation tape to insulate the wire joints or stripped parts of the wire, and trim the extra wire to avoid electrocution and short-circuiting.

→ Make sure the panel has no gap with the wall that allows its removal with bare hands. Also ensure that the screw terminals and wires in it are correctly seated.

→ After installation, clean the glass top of the panel well such that it has no grease, moisture, or covering on it.

### DON'Ts

▲ The device must not be used in an explosive atmosphere.

⚠ Do not open the device by yourself nor use it if any of its parts is broken. Also, do not use panel if its internal fuse is broken.

⚠ Do not interchangeably use the Neutral and Live wires.

⚠ Do not try to repair the device by yourself.

## Safety Instructions 6

→ Do not allow children to play with the device or its packaging as its plastic film and small components may pose a choking hazard to them.

→ Do not place the device in an exposed setting after connecting the load.

→ Do not dispose-off the device with other household garbage. It should be recycled according to the National regulations.

→ To avoid short-circuiting, do not peel off the plastic from the wire more than required.

→ Do not use a dripping wet cloth to clean the device.

→ Do not install the device in damp rooms or wet areas.

→ Do not connect a load higher than the power rating of the device (Refer to the technical specifications).

→ Do not leave the space between panel and wall as the water may seep into the panel only from the wall.

## Installation 7

1. Switch off the AC supply from the fuse/circuit breaker.

2. Connect the wires as shown in figure A.

3. Remove the glass top of the panel by inserting the tip of a slotted screwdriver into the casing locks at the bottom (See figure B).

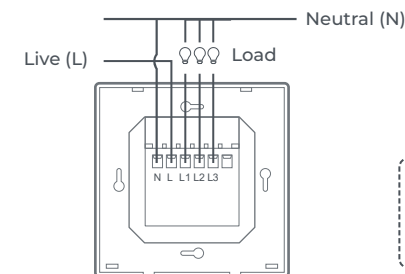


figure A

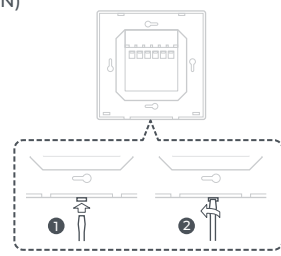


figure B

## Installation 8

4. With the help of a cross-slot screwdriver, fix the panel on the wall using mounting screws (See figure C).

5. Slide the glass top downwards, into the plastic casing, and press at the bottom until it gets locked (See figure D).

6. Switch on the AC supply for the panel and wait for at least 30 seconds for a proper operation.

7. Navigate to MTronic Help Center ([support.mtronic.pk](http://support.mtronic.pk)) and follow the steps in the MTronic 4-inch LCD Panel product category to connect your panel with the application

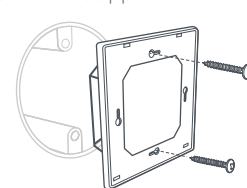


figure C

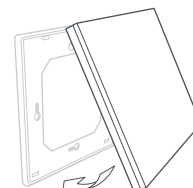


figure D

## Technical Specifications 9

Specification	Details
Item Type	Switch
Available Color	White and Grey
Material	Plastic and Glass
Control Method	Touch and Wireless
Dimensions	86 x 86 x 36 mm
Input Voltage	230 VAC, 50/60 Hz
Standby Power	< 2.5 Watts
Max Load Capacity	2 A @ 230 VAC (Resistive Load) 0.5 A @ 230 VAC (LED Load)
Interface	Short-Range Mesh Technology 5.0, IEEE 802.15.1
Dependency	MTronic MHub
Compatibility	Google Home, Amazon Alexa Assistant
Working Temperature	-25°C ~ +50°C
Humidity	85%

## Technical Specifications 10

### Radio Specifications

Wireless Communication	Short-Range Mesh Technology
Short-Range Technology Module	2.402-2.480 GHz Technology
Frequency	

### Antenna Properties/ Antenna Gains

Transmitter Power	+9dBm
Antenna Gain	3.96 dBi

### Disclaimers:

▲ MTronic disclaims the responsibility for any property or material damage and personal injuries caused by the incorrect installation, handling, or usage of the LCD Touch Panel.

▲ MTronic disclaims responsibility for the consequential damage caused by the opening of LCD Touch Panel by yourself.

