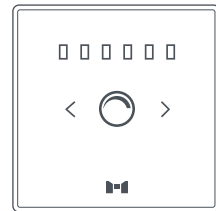




MTronic Smart Dimmer



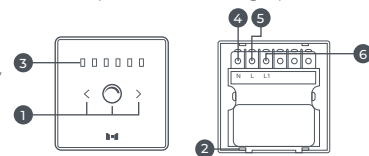
QUICK START GUIDE

EN

Product Overview 2

MTronic Smart Dimmer is a smart gang switch that allows you to control the light intensity and fan speed levels. It can operate in two modes, such as Fan Dimmer and Light Dimmer and is capable of handling up to six levels.

1. Touch Buttons
2. Casing Lock
3. Fan Speed/Light Intensity Level Display
4. Neutral Wire Terminal
5. Live Wire Terminal
6. Load Terminal



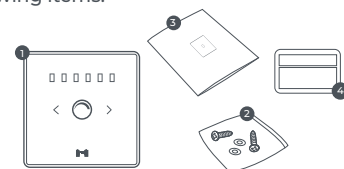
Smart Dimmer's Status LED

Status LED	Description
Turns Dim	Panel's button is off
Lights White	Panel's button is on
Blinks White Thrice	Panel is ready for provisioning
Blinks White Once	Panel is unprovisioning

Package Contents/Tools Required 3

The package consists of the following items:

1. MTronic Smart Dimmer x1
2. Screws x2
3. Quick Start Guide x1
4. Warranty Card x1



Following tools are required to install the Smart Dimmer on the wall:

1. Slotted Screwdriver
2. Cross-Slot Screwdriver
3. Wire Cutting Pliers
4. Insulation Gloves
5. Insulation Tape
6. Mains Tester

Safety Instructions 4

⚠ Danger!
Note about hazard

⚠ Warning!
Note about potential hazard

DOs

⚠ Tighten or loosen the screws when no Live wire is connected.

⚠ Since the installation requires working with high voltages, it MUST be installed and uninstalled by an expert electrician

⚠ Use the device only under 2000m altitudes.

⚠ Ensure there are appropriate fuse/circuit breakers installed for the space and turn them off before installation. Turn them on only after the installation is done.

→ Operate the device only within indoor environments to keep it sheltered from all weather conditions.

→ Wear insulation gloves, use wire nuts/electrical insulation tape to insulate the wire joints or stripped parts of the wire, and trim the extra wire to avoid electrocution and short-circuiting.

→ Under extremely low temperatures, operate the panel only after wearing gloves to avoid the risk of frostbite.

Safety Instructions 5

→ Use a wire gauge to select the wire size as required. Use 26~14 AWG solid or stranded wire preferably.

→ Make sure the panel has no gap with the wall that allows its removal with bare hands. Also ensure that the screw terminals and wires in it are correctly seated.

→ Use a slotted screwdriver that fits well in the casing lock, or it will damage the lock.

→ After installation, clean the glass top of the device well such that it has no grease, moisture, or covering on it.

DON'Ts

⚠ The device must not be used in an explosive atmosphere.

⚠ Do not open the device by yourself nor use it if any of its parts is broken.

⚠ Do not interchangeably use the Neutral and Live wires.

⚠ Do not try to repair the device by yourself.

⚠ Do not allow children to play with the device or its packaging as its plastic film and small components may pose a choking hazard to them.

Safety Instructions/Installation 6

→ Do not place the device in an exposed setting after connecting the load.

→ Do not dispose-off the device with other household garbage. It should be recycled according to the National regulations.

→ To avoid short-circuiting, do not peel off the plastic from the wire more than required.

→ Do not use a dripping wet cloth to clean the device.

→ Do not install the device in damp rooms or wet areas.

→ Do not leave the space between panel and wall as the water may seep into the panel only from the wall.

Installation

1. Switch off the AC supply from the fuse/circuit breaker.

2. Connect the wires as shown in the figure A.

3. Remove the glass top of Smart Dimmer by inserting the tip of a slotted screwdriver into the casing locks at the bottom (See figure B).

Installation 7

4. With the help of a cross-slot screwdriver, fix the Smart Dimmer on the wall using mounting screws (See figure C).

5. Slide the glass top downwards, into the plastic casing, and press at the bottom until it gets locked (See figure D).

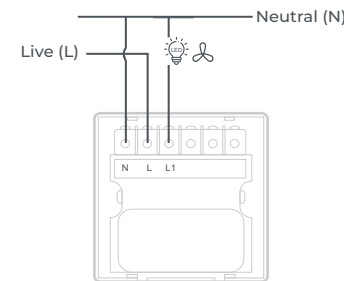


figure A

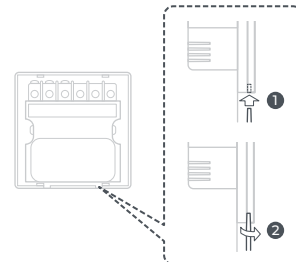


figure B

Installation 8

6. Switch on the AC supply for the Smart Dimmer and wait for at least 30 seconds for a proper operation.

7. Navigate to MTronic Help Center (support.mtronic.pk) and follow the steps in the Smart Dimmer product category to provision your panel with the application.

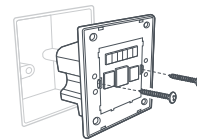


figure C

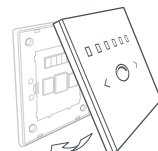


figure D

Note: To unprovision the panel, press its button for 5 seconds until the light starts blinking. The light blinks for 3 seconds, press the button again for 5 seconds within that 3 second interval to complete the unprovisioning process. Once the panel is unprovisioned, it blinks for 30 seconds, making it available for provisioning again.

Technical Specifications 9

Specification	Details
Item Type	Dimmer
Color	White, Black, Gold, and Grey
Material	ABS Plastic and Tempered Glass
Control Method	Touch and Wireless
Speed Levels	6
Device Modes	Fan Dimmer, Light Dimmer
Dimensions	86 x 86 x 36 mm
Input Voltage	230 VAC, 50/60 Hz
Standby Power	< 1 Watt
Max Load Capacity	Incandescent Bulbs: 0.65 A @230 VAC (150 W) Leading-Edge Dimmable LEDs: 0.65 A @230 VAC (150 W) Fan: 0.8 A @ 230 VAC (150 W)
Interface	Short-Range Mesh Technology 5.0, IEEE 802.15.1
Dependency	MTronic MHub
Compatibility	Google Home, Amazon Alexa Assistant
Working Temperature	-25°C ~ +50°C
Humidity	85%

Technical Specifications 10

Radio Specifications

Wireless Communication	Short-Range Mesh Technology
Short-Range Technology Module	2.402-2.480 GHz
Frequency	

Antenna Properties/ Antenna Gains

Transmitter Power	+9dBm
Antenna Gain	3.96 dBi

Disclaimers

→ MTronic disclaims the responsibility for any property or material damage and personal injuries caused by the incorrect installation, handling, or usage of the MTronic Smart Dimmer.

→ MTronic disclaims responsibility for the consequential damage caused by the opening of MTronic Smart Dimmer by yourself.

MTronic Global FZCO
19th Floor Conrad, Sheikh Zayed Rd, 5610, Dubai, UAE
www.mtronic.ae

